

# Panelfold®

08350/PAO  
BuyLine 1978

*Fifty Years Of Innovative Space Division Systems*



**Panelfold™**  
**1953-2003**

**Folding Doors and Folding Partitions**

# PANEFOLD HISTORY AND SERVICES

Now in its fifth decade, Panelfold has long been recognized as the innovative leader in the folding door, acoustical accordion folding partition and the operable and relocatable wall industry. Established in 1953, the company has progressed from its first small factory to a 140,000 square foot modern facility in suburban Miami, Florida, U.S.A. and has been a major employer in Miami's multi-cultural community.

Panelfold products are available to provide almost every conceivable size space division requirement with more product models, acoustical values, price ranges, and variety of surfacing materials and work surfaces than any other manufacturer.

## PRODUCT OVERVIEW

**Signature® Folding Doors** are made up of nominally five inch wide laminated panels, connected by hinge mouldings of the same materials. Please refer to **Page 3** for color selections. The doors are carried by free-rolling, double nylon wheels. A positive automatic latch and jamb mould is standard and security features are optional. **Page 3**

**Scale/4® Folding Doors** are made up of nominally four inch wide laminated panels, connected by Panelfold's exclusive dual walled Memory Action extruded vinyl. Please refer to **Page 7** for color selections. The doors are carried by free-rolling, double nylon wheels. A positive automatic latch and jamb mould is standard and security features are optional. **Pages 4-5**

**Scale/6® and Scale/6® Decorative Accents™** Folding Partitions are made up of nominally six inch wide by one-half inch thick laminated panels connected by Panelfold's exclusive dual walled Memory Action extruded vinyl. Genuine wood veneer, wood grain vinyl, textured vinyl and high pressure laminate are standard surfacing options. Please refer to **Page 7** for selections. The partitions are carried by free-rolling, double nylon-tired steel ball-bearing wheels. A positive automatic latch and jamb mould is standard and security features are optional. **Pages 4-5**

**Criterion® Folding Doors** are made up of nominally four inch wide rigid vinyl (PVC) extruded panels, connected by Panelfold's exclusive integral rigid hinges. The available color selections may be found on **Page 6**. The doors are carried by free-rolling, double nylon wheels. A powerful magnetic latch and jamb mould is standard. **Pages 6 and 8**

**EchoSorb® Acoustical Panels** are fabric wrapped aluminum framed NRC.75, panels that control unwanted annoying sound reflection and speech distortion. Please refer to Sweet's **09800/PAN**.



## Features and Benefits

Each of the Panelfold space division systems has its own unique acoustical, appearance, hanging weight, and cost characteristics. The materials, designs, and craftsmanship used for all the product lines have the performance that has established Panelfold as the quality leader over the years.

## Panelfold Information Systems

### Architectural Products Manual



Contains Products Overview and History; Product Selections Guides and Product Briefs with drawings, details, and layouts, 3-Part Guide Specifications; Surfacing Materials Selections Guide and Color Selectors.

### Panelfold Interactive CD-ROM



An advanced CD-ROM containing electronic product information, video, test data, installation instructions, interactive 3 Part Specifications and uniformly formatted CAD Drawings and Details (in both DWG and DXF) ready for integration into construction documents, Color Selectors, Catalogs and more.

### Sweet's CD



Electronic search and selection tool on CD-ROM published quarterly by Sweet's Construction Group. Contains complete product information, interactive 3 Part Specifications and uniformly formatted CAD Drawings and Details (in DWG).

## Panelfold on the World Wide Web



The content of the Panelfold Interactive CD-ROM, including Drawings and Specifications, may be accessed live on the web. Changes and additions to content are promptly posted, making this interactive tool the most up-to-date source of complete information available: **www.panelfold.com**



## Signature® Folding Doors

With the Designer Touch...Lend uncommon convenience to residential and contract interiors.

- Strong laminated wood panels
- Wood panel connector moldings
- Decorative extruded aluminum track and double nylon wheels
- Touch-bar™ positive latches and jamb mould or ADA compliant magnetic latches

**Signature** wood folding doors offer total flexibility for space planning. Featuring panels and shaped wood panel connector moldings. Signature doors blend with traditional or contemporary decor.

### WOOD PANEL CONNECTOR MOLDINGS



RED OAK



FROSTEX™  
WHITE



WOODTEX®  
WHEATWOOD™



WOODTEX®  
HONEYWOOD™

# Scale/6® • Scale/4® Folding Doors and Partitions



## The Practical Alternative for Saving Space With A Great Look

- Strong laminated wood panels
- Dual wall Memory Action® vinyl hinges
- Decorative extruded aluminum track and double nylon or ball-bearing wheels
- Touch-bar™ positive latches and jamb mould or ADA compliant magnetic latches

The variety of panel options has made this handsome folding door collection the outstanding choice of designers for many years. Select from an impressive lineup of rich, genuine wood veneers...economical, high fidelity Woodtex® wood grain vinyls...colorful Startex™, Sandtex™, Hightex™, Fabrictex® and Ropetex® textured vinyls, and a myriad of high pressure plastic laminates in four or six inch wide panels to ten foot heights. Designed to accommodate just about any doorway, closet, room divider, window covering and partition requirement, they save splendidly on space that swinging, bi-folding and sliding doors waste.



# GUIDE SPECIFICATIONS FOR SIGNATURE<sup>®</sup>, SCALE/6<sup>®</sup> AND SCALE/4<sup>®</sup> FOLDING DOORS

## PART 2. PRODUCTS

**2.1 FOLDING DOORS** shall be manually operated wood, folding type as manufactured by Panefold, Inc., Miami, Florida, U.S.A. and installed by an authorized representative of the manufacturer in openings prepared by others to Signature/Scale/6/Scale/4 requirements.

**2.2 TRACK AND HANGERS:** Track shall be extruded aluminum. Hanger assemblies with two nylon wheels @ Signature and Scale/4 and two ball-bearing wheels @ Scale/6 shall be suspended on alternate panels. A four-wheel truck hanger assembly shall be installed on each end post.

**2.3 PANEL SURFACES:** Panels shall be specially laminated engineered wood core, bonded with water resistant, plastic glue and surfaced with (specify one: wood veneer; wood grain vinyl; or textured vinyl @ Signature; or wood veneer; wood grain vinyl; textured vinyl; or high pressure plastic laminate (@ Scale/6 and Scale/4). Genuine woods, wood grains, and colors from manufacturer's selectors.

**2.4 CONNECTOR MOULDINGS (SIGNATURE):** Panels shall be connected by shaped wood mouldings.

**2.5 CONNECTOR HINGES (SCALE/6 AND SCALE/4):** Panels shall be hinged and edge sealed against sound light and air transmission with heavy duty, dual-wall, flame resistant, extruded vinyl. Hinges shall be securely locked into and protect the panel edges. They shall provide "Memory-Action" causing the panels to extend and stack equally, smoothly, and quietly. Color from manufacturer's selector.

**2.6 SCALE/6 DECORATIVE ACCENTS:** shall be (specify: open woven cane inserts; closed woven cane inserts; clear cracked ice translucent inserts; amber cracked ice translucent inserts; clear transparent inserts; or carved [one or both sides] panels.)

**2.7 TRIM:** Doors shall be supplied with (specify: decorative track; optional plain track mould to conceal track; or optional plain track with extruded aluminum sub-channel for recessed track). A jamb mould for jamb closure shall be furnished.

**2.8 HARDWARE:** Handles, Touch-Bar automatic latches, all necessary screws, installation hardware and instructions shall be furnished. Security units shall be as specified: Privacy latch and emergency release; cylinder lock one side only; cylinder lock one side, privacy lock other, cylinder lock two sides. Master-keyed insert type cylinder with lazy cam and flat tail piece, by others, shall be installed in lieu of regularly furnished cylinder.

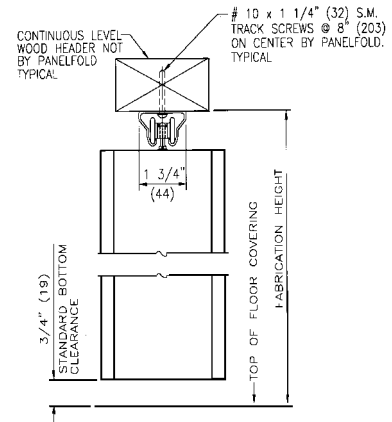
**2.9 STACK FORMULA:** (Approximately) Signature 1"/ft. (82 mm/m); Scale /6 and Scale/4 1-1/4"/ft.



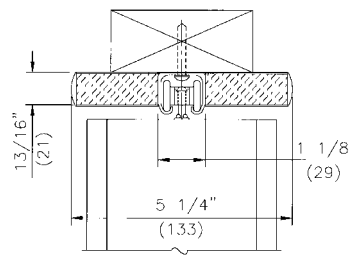
All models have a top aluminum track.

## VERTICAL SECTION - HEAD DETAILS

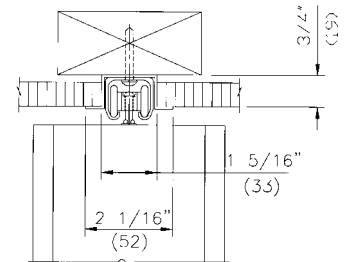
**HEAD TYPE 1**  
SURFACE MOUNTED INSTALLATION  
DECORATIVE TRACK  
BY PANEFOLD-STANDARD



**HEAD TYPE 2**  
SURFACE MOUNTED INSTALLATION  
TRACK AND TRACK MOULD  
BY PANEFOLD-OPTIONAL



**HEAD TYPE 3**  
RECESSED INSTALLATION  
TRACK AND SUBCHANNEL  
BY PANEFOLD-OPTIONAL

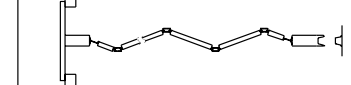
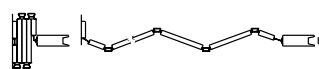


All Dimensions Shown In Parentheses Are Millimeters

## TYPES OF APPLICATIONS

SINGLE FIXED-JAMB PARTITION

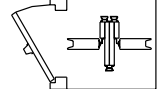
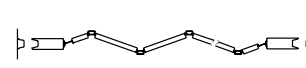
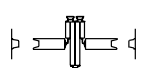
SLIDING JAMB PARTITION-POCKET INSTALLATION



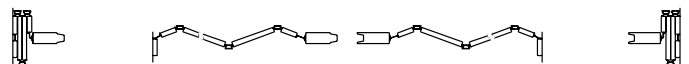
STANDARD INSTALLATION

DOUBLE-END POST PARTITION

POCKET INSTALLATION



JOINING PAIR OF FIXED-JAMB PARTITIONS



CANED



CARVED

**Scale/6** panels may be specified with decorative panel options including carved panel detailing, natural cane, translucent, clear or amber "cracked ice", transparent, or mirrored inserts.

## GUIDE SPECIFICATIONS FOR CRITERION® RIGID VINYL FOLDING DOORS

### PART 2. PRODUCTS

**2.1 FOLDING DOORS** shall be manually operated PVC, folding type as manufactured by Panefold, Inc., Miami, Florida, U.S.A. and installed by an authorized representative of the manufacturer in openings prepared by others to Criterion requirements.

**2.2 TRACK AND HANGERS:** Track shall be extruded aluminum. Hanger assemblies with two nylon wheels shall be suspended on alternate panels and on each end post.

**2.3 PANELS** shall be 4-1/2 (114mm) wide by .040" (10mm) thick, permanently fire resistant, extruded, rigid Polyvinyl Chloride (PVC).

**2.4 HINGING:** Criterion panels shall be interconnected by rigid, self-mating hinges formed as an integral part of each panel running the full height of the door. Within the hinge structure, integrated, continuous, extruded PVC veins shall be incorporated for proper hinge alignment.

**2.5 TRIM:** Doors shall be supplied with (specify: decorative track; optional plain track with track mould to conceal track; or optional plain track with extruded aluminum sub-channel for recessed track).

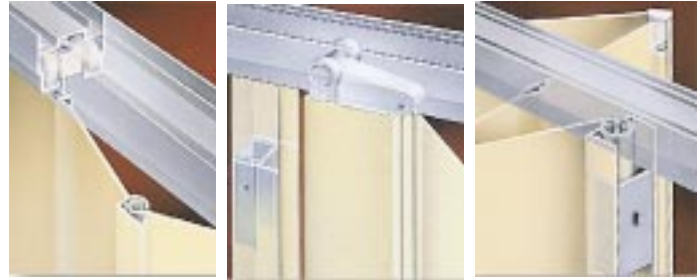
**2.6 END POST:** Rigid PVC 1-3/4" (45mm) wide by 1/2" (13mm) thick, double wall end post shall be equipped with handles and magnetic latch with nesting jamb mould and integral strike plate.

**2.7 JAMB POST:** Centerline PVC jamb post shall snap over concealed jamb clips providing a tight attachment to the jamb. There shall be no exposed fasteners.

**2.8 HARDWARE:** Each door shall be individually cartoned. Each carton shall contain track and all installing hardware and manufacturer's illustrated installation and service instructions.

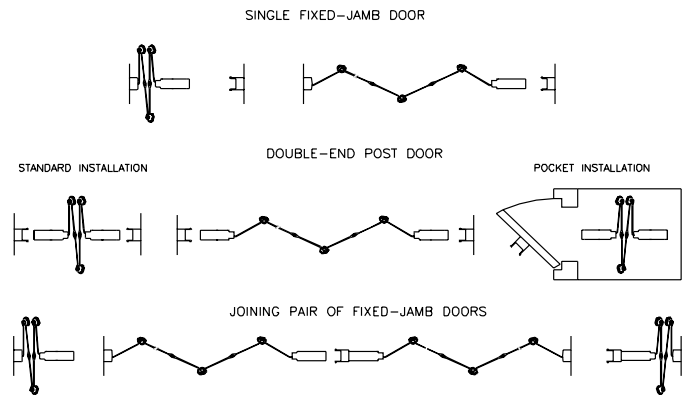
**2.9 STACK FORMULA:** Approximately 3/4"/ft<sup>2</sup> (19mm/m<sup>2</sup>) plus 2-1/2 (64mm) for each end post.

**2.10 HANGING WEIGHT:** Approximately 5/8 lbs./ft.2 (3KG/m<sup>2</sup>).

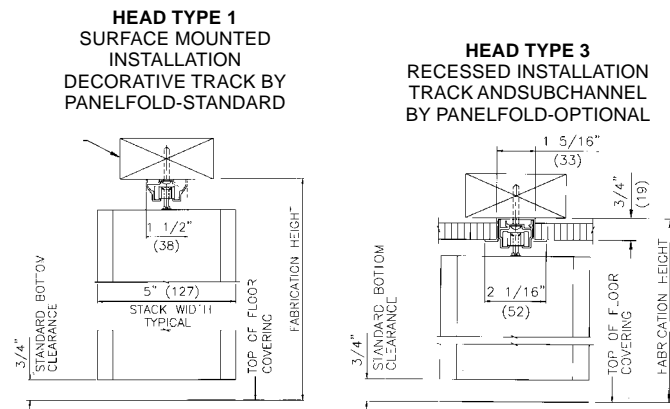


Criterion features single wall panels and rigid, self-mating hinges that travel smoothly on lifetime nylon wheels along an aluminum track.

### TYPES OF APPLICATIONS



### VERTICAL SECTION - HEAD DETAILS



All Dimensions Shown In Parentheses Are Millimeters



### Rigid Vinyl Panel Color Selections

Because the color is added before the panels are extruded, the color can not wear off. The panels never need painting. Color selectors are available.



See Page 8 for Product Illustrations

# Panelfold® Surfaces & Colors

You may select from an extensive line of surfaces and colors. Color selectors are available.

## WOOD VENEERS



WHITE ASH



NATURAL BIRCH



RED OAK



AMERICAN WALNUT

## WOODTEX WOOD GRAIN VINYL



WHEATWOOD™



HONEYWOOD™



CANYONWOOD™



SABLEWOOD™

## STARTEX™ TEXTURED VINYL



WHITE



ROSE MIST



OYSTER



CLOUD

## SANDEX™ MULTICOLOR VINYL



OYSTER



GREIGE



EARLY SKY



MORNING MIST

## FABRICTEX FABRIC TEXTURED VINYL



DOVER



PEARL



CORAL SAND



SEA FOAM

## ROPETEX ROPE TEXTURED VINYL



SNOW DRIFT



FROSTY



TAUPE



CLOUD

## HIGHTEX™ HIGHLY TEXTURED VINYL



CLOUD



FAWN



ANTIQUE ROSE



CEMENT

## RIBTEX BASIC™ VERTICAL RIB WALL CARPET



MALIBU



BUCKSKIN



SAND



TAUPE



CLOUD



MEADOW



FLINT



CARNIVAL

## WOVENTEX® I & II PANEL FABRICS



ROSE



BRITTANY



ORCHID



TWILIGHT

## WOVENTEX® III PANEL FABRICS



BURNISH



SUN DRENCHED



LILAC



MORRIS CODE

## TEK-WALL® 1000® PANEL FABRICS



BISCUIT BEIGE



PEBBLE BEACH



WOODROSE PETAL

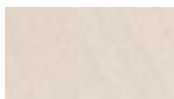


SPRAY MIST



In colors to blend or contrast with panel finish. Color selection card is available.

## WILSON ART® OR FORMICA® DECORATIVE LAMINATES



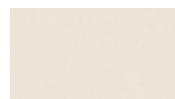
SANIBEL MAPLE



SHERIL WALNUT



WINDSOR MAHOGANY



CASHMERE



STORM NEBULA

For complete color selections, see Selectors, Interactive CD-ROM or Panelfold website at [www.panelfold.com](http://www.panelfold.com)

# Criterion® Rigid Vinyl Folding Doors



**Designed for tight budgets...for quick installation...for durability... for closets, utility rooms, and room dividers.**

- Tough, lightweight 4"(100mm) wide panels
- Full height, self mating, integral hinges
- Smooth rolling nylon wheels
- Extruded aluminum decorative track
- Full height jamb mould and magnetic latch
- Concealed jamb fasteners

*See Page 6 for Guide Specifications*

## **Installation is Quick And Easy**

No expensive stubbing out or heading down is required to install Criterion rigid vinyl panel folding doors. Engineered to travel smoothly on lifetime nylon wheels and so light weight they may even be installed on existing ceilings. Simply attach the aluminum track to the ceiling or header with supplied screws. Unique concealed jamb clips are provided to clip on the deep nesting jamb mould which receives the end post latch and the permanent jamb. No exposed fasteners. Fast, neat and practical. These models are really easy to handle on the job.

# Panelfold®

P.O. Box 680130, Miami, Florida 33168

305/688-3501 Fax: 305/688-0185 E-mail: [sales@panelfold.com](mailto:sales@panelfold.com) Internet: [www.panelfold.com](http://www.panelfold.com)

Panelfold products are manufactured and sold under Panelfold®, Moduflex®, Sonicwal®, Fabricwal®, Closetwal®, Scale®, Europa®, Accent®, EchoSorb™, Criterion®, Plasticdor™, Canedor®, Carvedor®, Glazedor®, Mirrordor™, Startex™, Fabrictex®, Ropetex®, Woodtex®, Softex™, Ribtex®, Woventex®, Sheer Look®, PrimeSpacer®, Signature®Series, Firecoustic®, Acoustiflame®, Action Track®, Memory Action®, Memory Action Hinge Design®, Panelok™, Traklok™, Touch-bar™, Gripull™, Drawtite™, Ceilingguard™, Ceilingshield™, Trakseal™, Sonicsweep™, SafetyFlex™, Autoseal™, and Manuseal™ trademarks; U.S. Patent Nos. 4454690, and 4867221. Canadian Patent Nos. 1139155, 1148410, and 1260974. Other U. S. patents pending. Other foreign patents issued and pending. Panelfold is constantly developing its products and reserves the right to change specifications or materials without notice. Form No. SA404DD. Printed in U.S.A.

**Panelfold also manufactures a broad line of Operable and Relocatable Walls & Acoustical Accordion Folding Partitions. Please refer to Sweet's 10650/PAN**